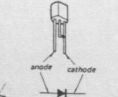


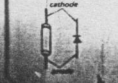
D3: TL489CP



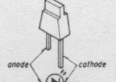
IC401:  $\mu$ PC574J



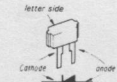
O1-204: 1S1555  
O1-403: 10E2



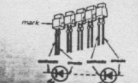
D206: SLP241B  
D207: SLP141B



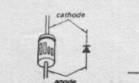
D301: KV1226



D208: SLP252B-06  
(SLP252B)



D404: EQB01-14  
(EQA01-14R)



- All capacitors are in  $\mu$ F unless otherwise noted, pF =  $\mu$ 50WV or less are not indicated except for electrolytic and tantalums.
- All resistors are in ohms,  $\frac{1}{4}$ W unless otherwise noted. k $\Omega$  = 1000  $\Omega$ , M $\Omega$  = 1000 k $\Omega$ .
- : nonflammable resistor.
- : internal component.
- : panel designation.
- : adjustment for repair.
- : B+ bus.
- Voltages are dc with respect to ground unless otherwise noted.

Note: The components identified by shading and mark  $\nabla$  are critical for safety. Replace only with part number specified.

Ref. No.	Switch	Position
S1	FM-SW2-MW	MANUAL TUNING
S2-1 to S2-6	FM PROGRAMMED TUNING	OFF
S2-8	MODE/TUNING	STEREO
S3	FM PROGRAM	OFF
S801	POWER	OFF

- Readings are taken under no-signal (detuned) conditions with a VOM (20 k $\Omega$ /V).
- ( ) : AM
- [ ] : tuned in FM STEREO signal.
- < > : FM PROGRAMMED TUNING
- Switch

noted. p.F :  $\mu$ F  
for electrolytics  
otherwise noted.

